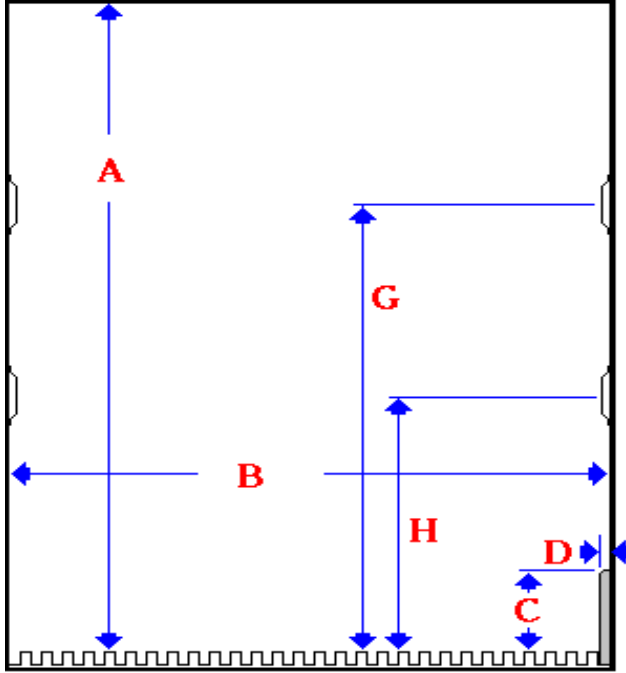


Insulated Bulkheads

Insulated Bulkhead Order Form

Bulkhead Part # _____
 Trailer Manufacturer: _____
 Person Ordering: _____

Quantity _____
 Purchase Order # _____
 Date Required _____



	Front	Center	Rear
A =			
B =			

C = _____ **D =** _____

Please Circle the style of logistic track in trailer:



F



A & E

Logistic Track Location

G =

Top
Bottom

H =

--

* Measure from top of floor to Center line of logistic track

Bill To:

Phone #

Contact

Ship To:

Contact

Circle Door Location (if applicable)

Roadside Center Curbside

Circle Hinge Location (if applicable)

Roadside Curbside

Please list any options you would like on or with your bulkhead(s). Fans and Blowers - must specify location (roadside or curbside).

Part #	Description

Since each bulkhead is custom made to your specifications, an F/G representative may call you regarding your order. Once we have the information we need, we can assure you a bulkhead of superior quality.

Thank You For Your Order!



PRODUCTS, INC.

Insulated Bulkheads

Important Bulkhead Option Information

Temperature Sensitive Issues

When positive temperature sources are not available, alternatives are as follows:

1. A bulkhead with adjustable vents will allow some cold air to enter your second compartment.
2. For additional air flow in your second compartment, consider installing a Fan Kit or a Blower Kit in the bulkhead to transfer more cool air to the rear of the trailer. (*Note: Neither option can heat).
3. If product behind the bulkhead gets too cold, it may be from air flowing under the bulkhead through a corrugated floor. An F/G Floor Sealer Kit can help in these cases.
4. If product is freezing to the floor behind the bulkhead, especially when floor loading on a flat floor, try loading on pallets directly behind the bulkhead.

Walk Through Door Issues

1. If you would like a walk through door in the bulkhead, consider the door location that will best suit your needs, curbside, center, or roadside.
2. Which side you would like the door hinged on, curbside or roadside.

General Operational Issues

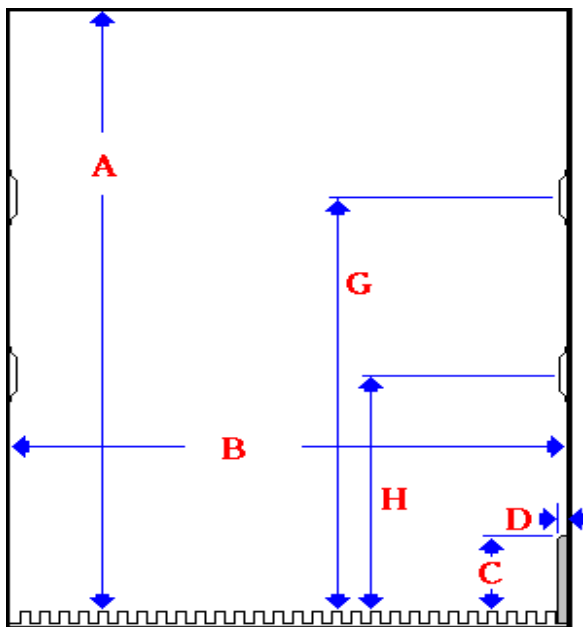
1. Take a look at your operational needs and habits. Consider whether a portable or track-mounted bulkhead will do the best job.
2. If you have a wedge trailer we will require the height and width measurements from the front, center and rear of the trailer for proper fit.
3. If you now use or are going to use track mounted bulkheads, **FG cautions that traveling with the bulkhead against the ceiling may cause excessive wear and damage.**

Most Popular Options

Logistic Straps
Fan Kit

Adjustable Vents
Uni-Flow Blower

Important Trailer Measurements for Bulkhead Specifications



A = The inside height of the trailer. Measure from the top of the corrugated floor to the ceiling.

B = The inside width of the trailer. Measure from sidewall to sidewall.

C = The height of any scuff liner on the sidewall of the trailer.

D = The thickness of any scuff liner on the sidewall of the trailer.

G&H = The locations of any logistic track on the trailer wall. Measure from the top of the floor (if corrugated) to the center of each track location.

