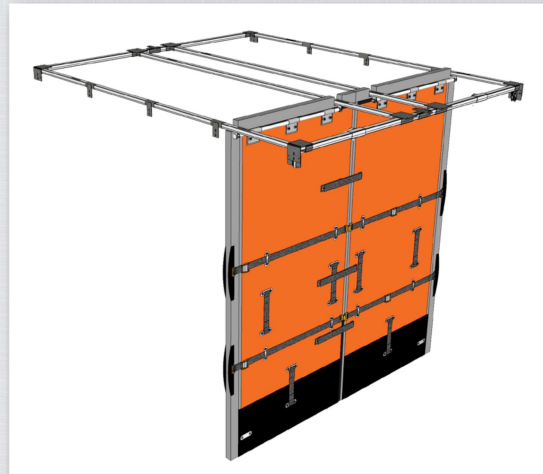
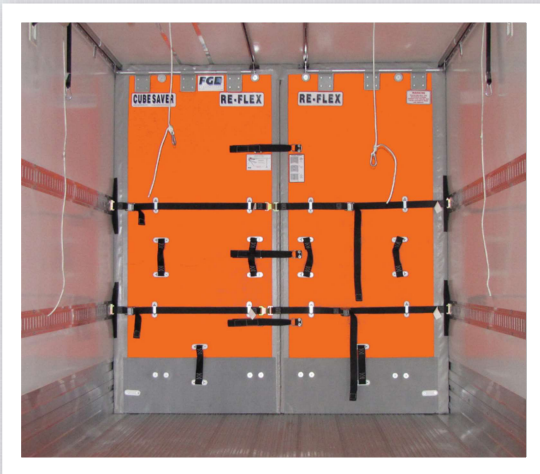


# CUBESAVER®

## TRACK SYSTEM + RE-FLEX®

The most popular track bulkhead in the U.S.A.

- Patented dual track system allows bulkhead sections to move independently.
- The CubeSaver® allows loading of an odd number of pallets in different temperature zones with an optional offset bulkhead.
- The track design and lift assists combine with the Re-Flex® Bulkhead for an easy lifting solution to track bulkheads.
- The CubeSaver® features the patented Auto-Stop lift assist, security strap and rope stops for the ultimate in safety.



PATENTED COMPOSITE STIFFENERS FOR CONSISTENTLY STRAIGHT BULKHEADS.

NUMBER ONE TRACK MODEL • LIMITED WARRANTY • REDUCES DAMAGE & LOSS



INSULATED BULKHEADS