

RAC-1A / RAC-1B

Thermo King Precedent DE Return Air Bulkhead

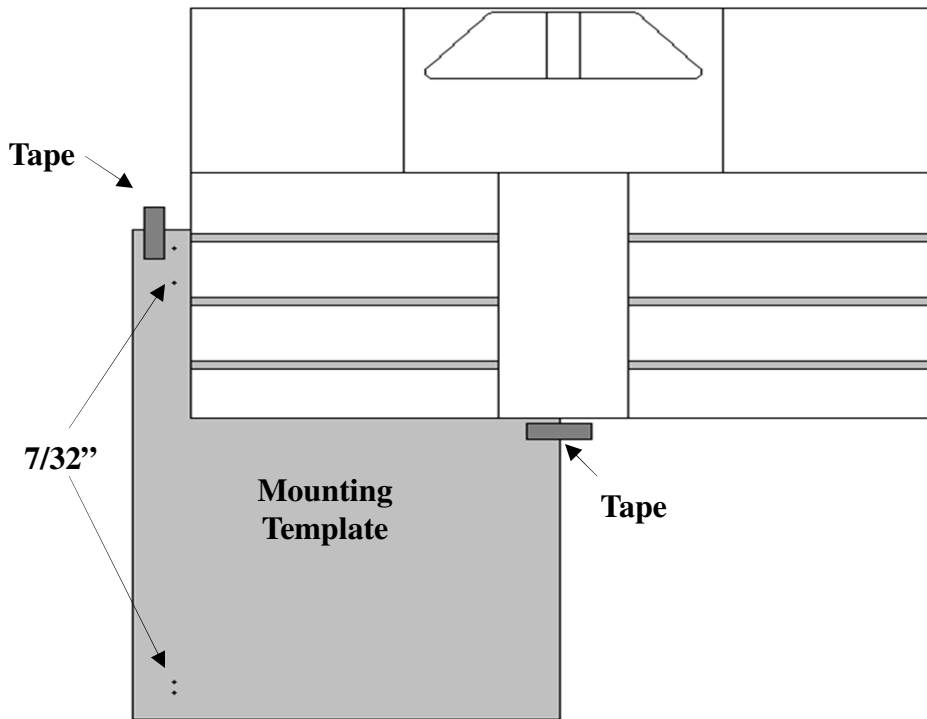


DIAGRAM 1

A mounting template is supplied. The template is universal for this bulkhead. Please use this template to make a more substantial template that can be used over and over as a one will not be sent with every unit.

1. Prior to installation, use the supplied template to mark the mounting hole locations on both sides of the reefer unit. Place the template tightly around the reefer unit as shown in **DIAGRAM 1**. Tape the template into position and mark the top and bottom holes. Flip the template and repeat on the other side of the reefer unit.
2. Install both Latches and "A" Track pieces as shown in **DIAGRAM 2** (Page 2). Start by pre-drilling the marked hole locations with a 7/32" drill bit. Drill deep enough to penetrate the vertical wall posts that support the reefer unit. Use the provided thread cutting screws and attach the Track and Latch pieces.

RAC-1A / RAC-1B

Thermo King Precedent DE Return Air Bulkhead

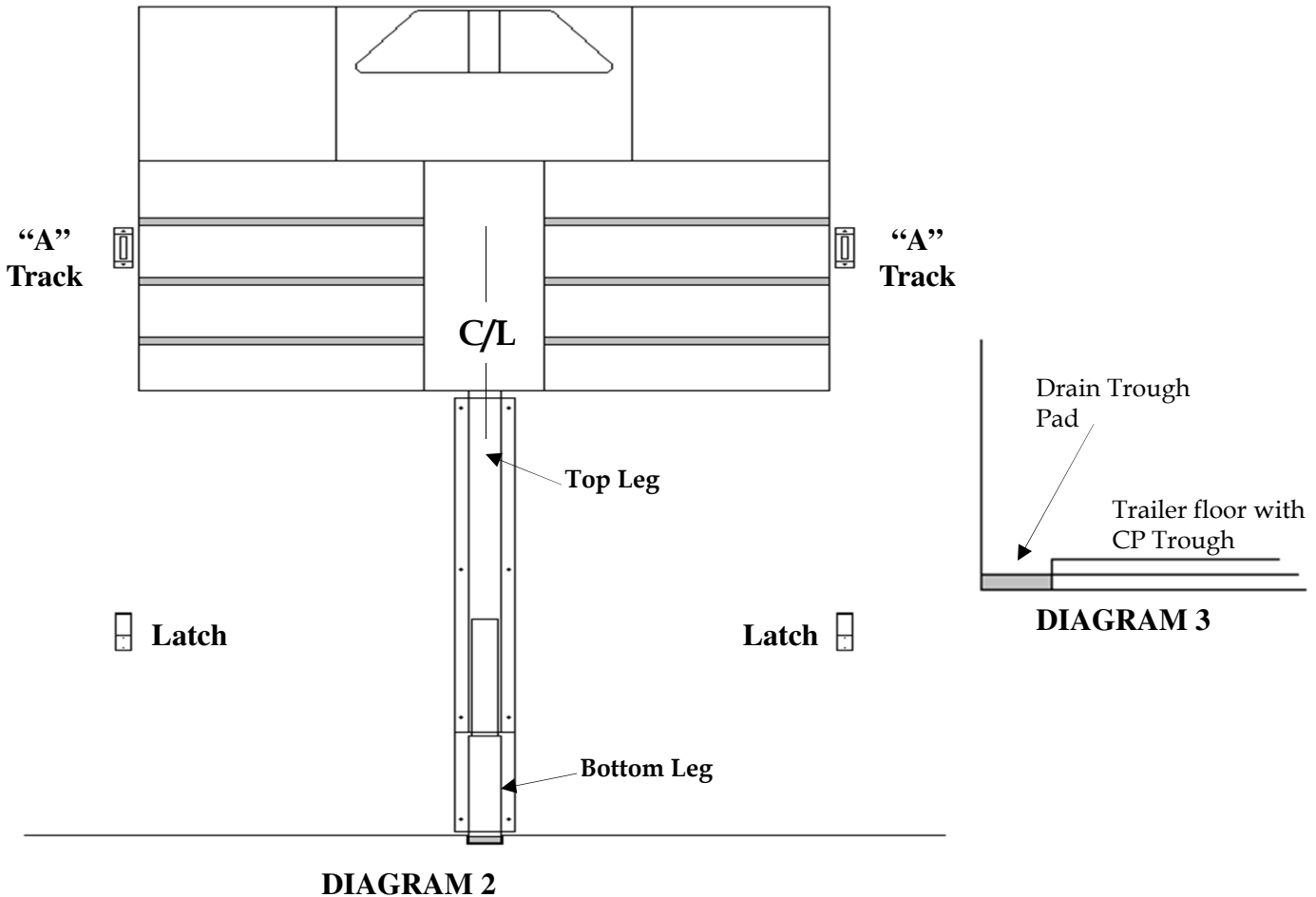


DIAGRAM 2

DIAGRAM 3

3. Next, install the RAC1 Leg. **NOTE* If this trailer has a drain trough in the floor, the first thing you must do is place the self adhesive piece of thick/dense grey foam in the trough just in front of the Center Partition floor trough. (See Diagram 3)* The leg is made of two interlocking pieces. Start with the bottom or short piece first. Place the closed end down onto the floor (or drain trough pad mentioned above) so that the leg is in line with the Center Partition Floor Trough. Drill (7/32") and fasten in place vertically to the front wall using rivets and washers provided. Next, place the top or long piece of the leg under the reefer unit and over the bottom leg already attached. Press the closed end of the leg up against the center bottom of the reefer unit and attach to the front wall with rivets and washers.

4. Mount each pallet stop as shown in **DIAGRAM 4** (Page 3). Position the pallet stop so the tall side is up. Place the shorter side on the floor or into the drain trough if present. Make sure that the pallet stops are not mounted too wide on the front wall or they could interfere with the outside edge of the bulkhead when mounted. Pre-drill (7/32") and fasten with 2 1/2" self-threading metal screws into the vertical posts if their location is known. Additional wood screws may be used if necessary.

RAC-1A / RAC-1B

Thermo King Precedent DE Return Air Bulkhead

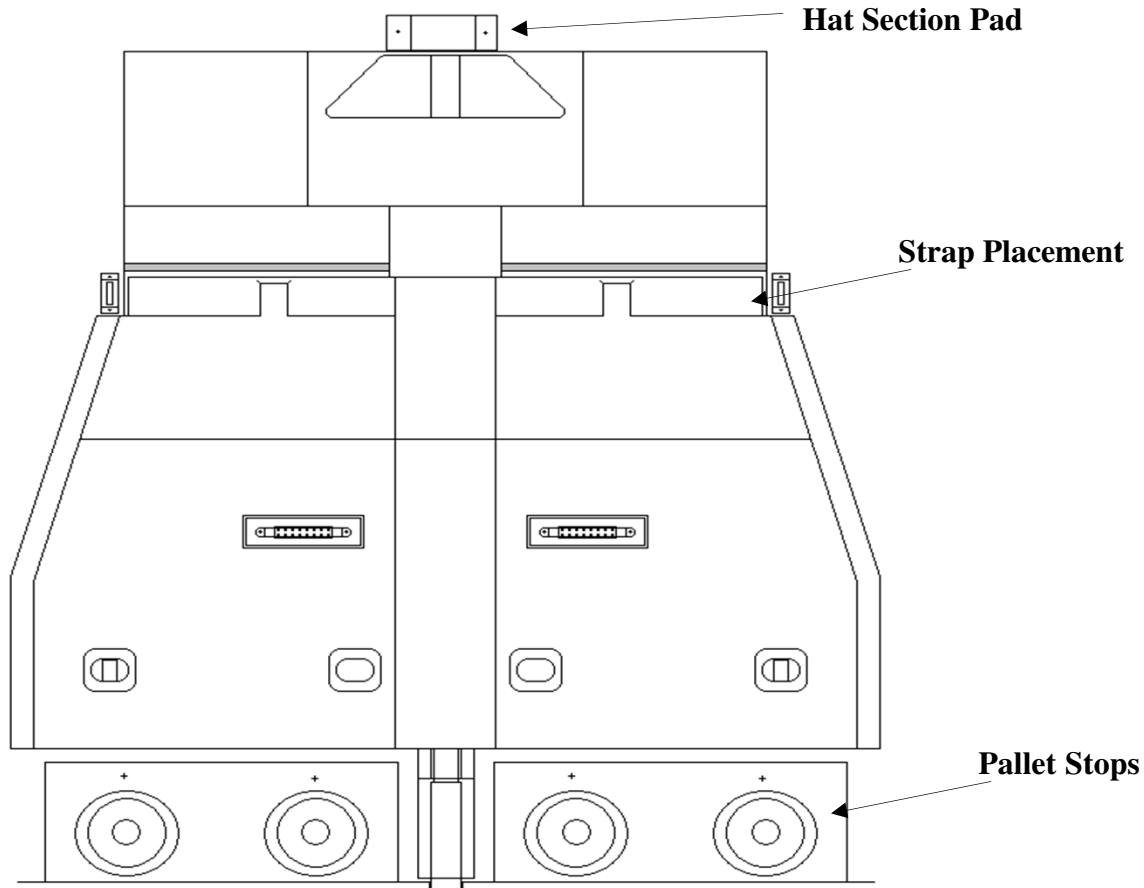


DIAGRAM 4

5. Install the Hat Section Pad between the top of the reefer unit and the ceiling of the trailer. Once again, use rivets and washers. **See DIAGRAM 4.**
6. To install the **RAC1**, slide the corresponding holes in the bulkhead over the metal latches. Push the **RAC1** to the front wall and down to seat the **RAC1** firmly on the latches.
7. Finally, finish installing the strap at the top of the bulkhead. The ratchet and “E” clip do not come installed and the bulkhead strap must be threaded through the ratchet. Once completed, attach the strap to each “A” track piece and ratchet securely in place.